



## Situation Report 01

# Delhi NCR Floods

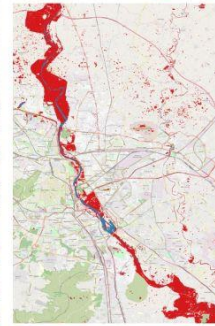
Date: 06<sup>th</sup> September 2025

Time: 02:00 PM

### Flooding across Yamuna using DeepFlood



Minimal flooding seen on 30<sup>th</sup> August 2025



Heavy flooding seen on 3<sup>rd</sup> September 2025

• DeepFlood mapped floods in the Yamuna river during recent rainfall.

• DeepFlood uses SAR satellite data and advanced AI models to automatically detect floods.

• SAR can see through clouds, enabling real-time flood monitoring.

• The Processing time is less than 40 seconds for these maps.

• The Comparison shows there was no flooding on 30th August however extensive flooding is seen on 3rd September along the Yamuna.

HydroSense Lab, IIT Delhi

Source: [LinkedIn](#)

## SITUATION UPDATE

- The Yamuna in Delhi has been flowing above the danger mark for several days; recent peak readings have been reported around 207 metres (still above the danger threshold), driving flooding and waterlogging across low-lying neighbourhoods in North and East Delhi.
- Reported people affected across the capital and surrounding NCR approx. 18,000 people reflecting ongoing evacuation and registration efforts as the river level fluctuates
- Civil Lines, Majnu Ka Tila, Kashmere Gate, Shastri Park, Mayur Vihar and areas along the Yamuna have seen severe inundation; several relief sites and some tented camps have themselves experienced water intrusion
- Low-lying sectors in Noida (reported examples include Sectors 92, 135, 150 and adjoining areas) have recorded extensive waterlogging and basement/parking inundation; local evacuations have been carried out as Okhla/upstream releases pushed river/discharge levels up.
- The Delhi government and district authorities have established 35 relief camps across affected zones; camp populations are mobile as some camps have been evacuated or re-located when waters rose. Government reports mention hundreds of tents across multiple sites (e.g., 522 tents set up at 27 sites in one official account),
- Food distribution, potable water, sanitation (toilets, menstrual hygiene supplies), and vector control (mosquitoes) are repeatedly highlighted as gaps or stressed services in multiple media reports; camp managers and doctors note skin infections, itching and other minor waterborne/ contact ailments — no major outbreak reported yet in mainstream coverage, but surveillance and primary health services are required
- Livelihood loss and informal-sector impacts (hawkers, daily wage workers) are reported — displaced families are also attempting small camp-level trade to meet needs (informal “camp economy”). Cash/food assistance, dry clothing, and household kits are urgent needs.

## Statistical Overview



Population Affected:  
18,000



Relief Camps:  
35



Inmates:  
1200+



Flood Inundated Areas in Delhi | Source: Media

## GOVERNMENT RESPONSE

- NDRF and local teams have evacuated 1,200+ people in targeted operations; boat evacuations also reported in East Delhi.
- Delhi administration activated flood alerts, set up control rooms and relief camps; central agencies (NDMA/NDRF/State disaster teams) and neighbouring state authorities (UP) have mobilised resources and monitoring. The Central Water Commission and barrage release notes are being referenced for forecasting river behaviour

### Source of Information

Media, Social Media, Sphere India WhatsApp Group

### Key Contacts:

- Mr. Vishnu P , Sphere India: +91 90487 79909; [vishnup@sphereindia.org.in](mailto:vishnup@sphereindia.org.in)

### Disclaimer:

Sphere India makes every effort to verify the information contained in its Situation Reports. As the ground situation changes rapidly in emergency situations, users should check with concerned agencies before making any decisions based on the information provided in this report.

Supported By:

