

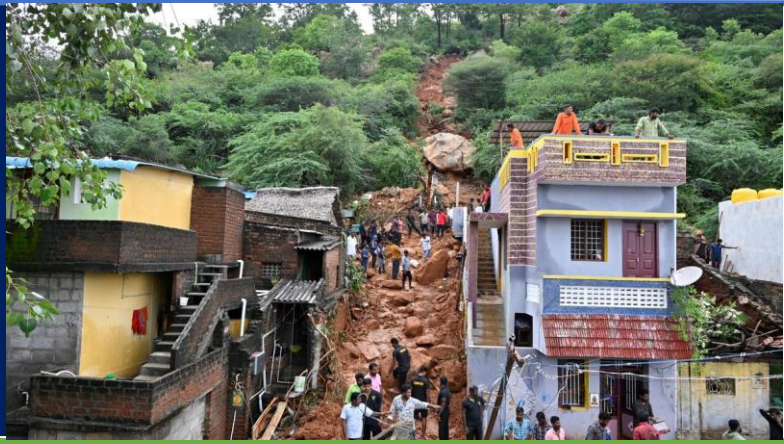


SITUATION REPORT- 2

Cyclone Fengal

Date: 09th December 2024

Time: 09:30 AM



SITUATION UPDATE AND RESPONSE

Tamil Nadu

Tamil Nadu is the most severely impacted, with **14 districts and 1,501 villages affected**, impacting a **population of 1.5 crore**. Krishnagiri and Villupuram in north Tamil Nadu, close to where Fengal made landfall, were among the worst affected areas. Mailam village in Villupuram received 510 mm of rainfall in 24 hours. The state has reported 30 fatalities due to floods, landslides, wall collapses, lightning strikes, electrocution, and other causes. A total of **6,486 houses** have been damaged, and **1,749 individuals** have been evacuated to safer locations. **Nine relief** camps have been opened, providing shelter to **637 inmates**. Livestock losses include **1,69,043 cattle**. Infrastructure damage includes 135 electricity poles, 2,351 fallen trees, 220 streetlights, one bridge, 403 kilometers of roads, and disruptions to 17,068 drinking water supply points. Agricultural losses are extensive, with 17,905 hectares of farmland affected. As per Chief minister letter, 4,269 anganwadi centres, 205 primary health centres, and 5,936 school buildings also severely impaired

Andhra Pradesh

Andhra Pradesh has seen significant damage, with **5 districts and 435 villages** impacted, affecting a **population of 2,204**. The state has recorded three fatalities and damage to five huts (one fully and two partially). A total of **650 people** have been evacuated, and four relief camps have been established, housing 650 individuals. Livestock losses include 22 animals. Infrastructure damage includes 154.7 kilometers of roads, 126 streetlights, 198 LT poles, and 29.25 kilometers of 11KV and LT lines. Additionally, three fisheries nets have been damaged. Agricultural losses span 6,825 hectares, with 77 hectares of horticultural crops affected

Puducherry

Puducherry has experienced heavy losses, with one district **and 87 villages affected**, impacting **2.85 lakh people**. The region has reported four fatalities and extensive damage to **4,322 houses (4,168 fully and 154 partially)** and 25 huts. **Over 32,000** individuals have been evacuated, with **208 relief camps operational, accommodating 8,000 people**. Livestock losses include 43 animals. Infrastructure damage comprises 400 electricity poles, approximately 500 fallen trees, 57 damaged boats, and 25 damaged buildings, including 12 schools, four colleges, and nine primary health centers (PHCs). Agricultural losses include 5,527 hectares of affected farmland.

Kerala

Kerala has reported moderate impacts, with **six districts affected**. **Two houses** have been fully destroyed, and **nine partially damaged**. Three relief camps have been set up, housing 22 individuals.



SITUATION UPDATE AND RESPONSE

- The seven member inter-ministerial central team (IMCT) visit places affected by cyclone in Cuddalore district and Puducherry to assess the situation
- The Central government has approved the release of ₹ 944.8 crore to the Tamil Nadu government as two installments of central share from the State Disaster Response Fund (SDRF) to help it provide relief to people affected
- The School Education Department in TN is in the process of identifying the loss of textbooks, uniforms due to Cyclone Fengal and has begun distribution of new sets to students starting with Cuddalore district.
- A total 15 teams of NDRF were deployed in cyclone affected states (Tamil Nadu-09, Andhra Pradesh-04 and Puducherry-02) and all teams have been de- inducted.
- Tamil Nadu govt has mobilized extensive resources to restore infrastructure, provide relief materials, and support affected families. Compensation packages and repair works for roads, drinking water supply, and electricity restoration are ongoing.
- Andhra Pradesh govt is actively addressing agricultural and infrastructural losses while supporting evacuees in relief camps. Efforts include road repair, electricity restoration, and assistance to fisherfolk.

Key Contacts:



- Altamash Khan, Manager - IAC, Sphere India | Altamash@sphereindia.org.in | 9718073951



Source of Information

MHA, Media, Social Media, Sphere India WhatsApp Group

Disclaimer:

Sphere India makes every effort to verify the information contained in its Situation Reports. As the ground situation changes rapidly in emergency situations, users should check with concerned agencies before making any decisions based on the information provided in this report.

Supported By:

HCLFoundation

