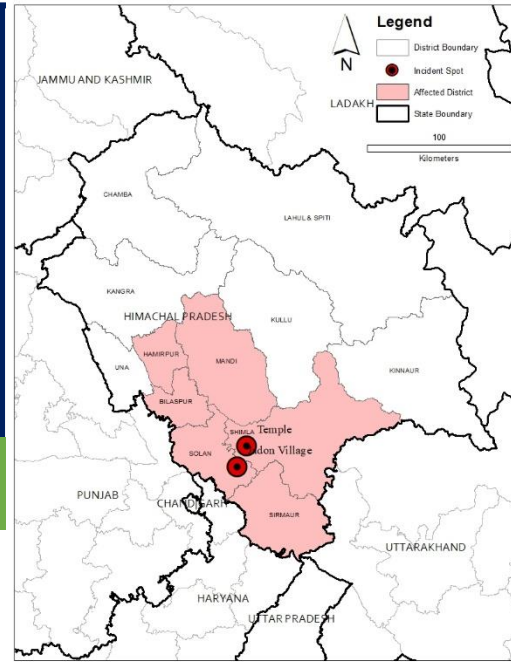


# Situation Report

## Cloudburst in Himachal Pradesh

**Date: 14<sup>th</sup> August 2023**  
**Time: 10:30 AM (IST)**

### SITUATION UPDATE AND RESPONSE



- At least seven individuals lost their lives, while three remain missing, due to a cloudburst in Jadon village of Kandaghat subdivision in Himachal Pradesh's Solan district on Monday morning. The incident led to the destruction of two houses and a cowshed.
- In a separate incident, heavy rains caused the collapse of a Shiv temple in Shimla, Himachal Pradesh, resulting in the unfortunate death of nine people. Search and rescue operations were in progress around the Summer Hill area of Shimla, where several individuals were feared to be trapped due to a landslide near the Shiv temple.
- The state has been severely affected by continuous rainfall spanning approximately 55 hours, causing extensive damage including flooding, landslides, and falling trees in regions such as Mandi, Sirmaur, Shimla, Hamirpur, Bilaspur, and Solan. Numerous houses have been damaged, and reports indicate that some are without electricity and water.
- Over 800 roads, including major routes like Kalka-Shimla, Chandigarh-Manali, Shimla-Dharamshala, and Paonta-Shilai NH, have been shut down across the state. This closure has had a significant impact on more than 2,000 bus routes.
- According to the Indian Meteorological Department (IMD), Himachal Pradesh experienced substantial rainfall in the 24-hour period ending at 8:30 am on 14<sup>th</sup> August. Notable figures include Kangra with 273 mm, Shapur (AWS) with 231 mm, Mandi (AWS) with 124.5 mm, Shimla (AWS) with 108.5 mm, Mandi with 138 mm, and Sundernagar with 168 mm of rainfall.
- Due to the heavy rainfall, a flood-like situation persists in Balh Valley within Mandi district, leading to the stranded status of several tourists.

### SITUATION UPDATES



Human Lives Lost – 16



Missing people - 03



Completely damaged house - 02



Roads Affected - 800



No. of persons evacuated – 27286



*Cleaning Roads*  
*Source: Media*

## HUMANITARIAN RESPONSE

### Government Preparedness and Response

- The IMD office in Shimla, Himachal Pradesh, has forecast heavy to very heavy rainfall for parts of Bilaspur, Chamba, Hamirpur, Kangra, Kullu, Mandi, Shimla, Sirmaur, Solan, Una, Kinnaur, Lahaul, and Spiti.
- The Himachal Pradesh police have issued an advisory, urging citizens to avoid non-essential travel, especially at night, in areas prone to landslides and rockslides which may not be easily visible.
- In response to the situation, the Chief Minister held a virtual meeting with all district commissioners on 13<sup>th</sup> August evening. Subsequently, a holiday was declared for schools, colleges, industrial training institutes, engineering, polytechnic, and pharmacy colleges on Monday.
- Rescue efforts led to the successful evacuation of six individuals, as confirmed by Solan Divisional Commissioner.
- The Chief Minister has directed relevant authorities to extend all possible assistance and support to the affected families during this challenging time.



Source: Media



Source: Media



#### Key Contacts

Mr. Cyljo Abraham, IAC, Sphere India,  
8750396488 | [cyljo@sphereindia.org.in](mailto:cyljo@sphereindia.org.in)



#### Source of Information

Media, Social Media, Sphere India  
WhatsApp Group

#### Disclaimer:

*Sphere India makes every effort to verify the information contained in its Situation Reports. As the ground situation changes rapidly in emergency situations, users should check with concerned agencies before making any decisions based on the information provided in this report.*