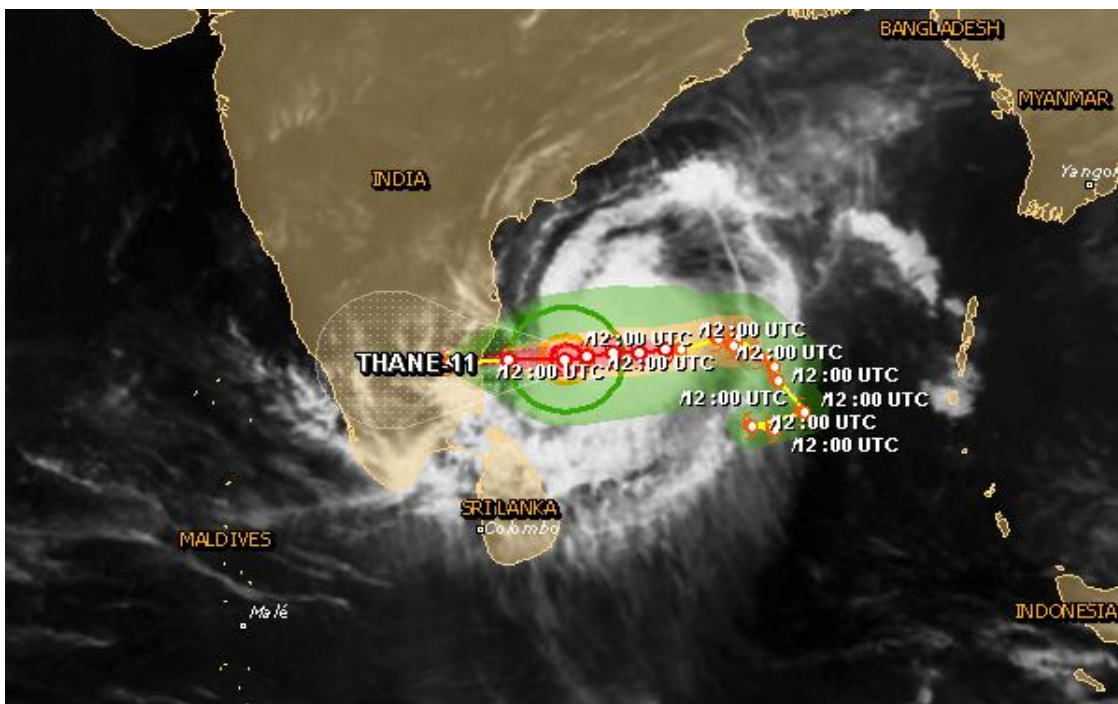




### Cyclonic Storm THANE over southwest Bay of Bengal and Cyclone Warning for north Tamil Nadu and south Andhra Pradesh coast 29<sup>th</sup> December 2011

The very severe cyclonic storm 'THANE' over southwest Bay of Bengal moved westward and lay centered at 1130 hrs IST of today, the 29<sup>th</sup> December 2011 near latitude 12.0°N and longitude 82.0°E, about 220 km east of Puducherry, 200 km southeast of Chennai (Tamil Nadu) and 400 km north-northeast of Trincomalee (Sri Lanka). The system is likely to move westwards and cross north Tamil Nadu coast between Nagapattinam and Chennai, close to Puducherry around early morning of 30<sup>th</sup> December 2011.

#### Current Storm Status:



Legend: areas affected by winds of 39mph (green), 58mph (orange) and 74mph (red); shaded area is uncertainty cone of forecasted cyclone path.

(Source: The Global Disaster Alert and Coordination System)

- The storm is: **Active**
- Current country: **Not near land**
- Current position: **82.1, 11.79**
- Alert level at current position: **Orange**
- Basin: **NorthIndian**

- Current strength: **Cyclone with Saffir Simpson category 1**
- Current maximum sustained wind speed: **41 m/s, 79 kt**

| Date/Time(IST)  | Position(lat. °N/<br>long. °E) | Sustained maximum<br>surface wind speed (kmph) | Intensity                  |
|-----------------|--------------------------------|--|----------------------------|
| 29-12-2011/0530 | 12.3/83.0                      | 120-130 gusting to 145                         | Very Severe Cyclonic Storm |
| 29-12-2011/1130 | 12.0/82.3                      | 120-130 gusting to 145                         | Very Severe Cyclonic Storm |
| 29-12-2011/1730 | 12.0/81.5                      | 110-120 gusting to 135                         | Severe Cyclonic Storm      |
| 29-12-2011/2330 | 12.0/80.7                      | 110-120 gusting to 135                         | Severe Cyclonic Storm      |
| 30-12-2011/0530 | 12.0/80.0                      | 100-110 gusting to 125                         | Severe Cyclonic Storm      |
| 30-12-2011/1730 | 12.0/78.6                      | 65-75 gusting to 85                            | Cyclonic Storm             |
| 31-12-2011/0530 | 12.0/77.2                      | 55-65 gusting to 75                            | Deep Depression            |
| 31-12-2011/1730 | 12.0/75.8                      | 45-55 gusting to 65                            | Depression                 |

#### Possible Impact Analysis:

Over north coastal Tamil Nadu and south coastal Andhra Pradesh, extensive damage to thatched roof and huts. Minor damage to power and communication line due to uprooting of large avenue trees and flooding of escape routes.

**Possible Affected Population:** Up to **1.2 million people** can be affected by wind speeds of hurricane strength or above. In addition, **78.88 thousand people** are living in coastal areas below 5m and can therefore be affected by storm surge.

#### Possible Affected Cities:

| City Class (1 to 6) | Country | Province   | Name        | Distance (km) | Wind speed (km/h) | Estimated arrival time (IST) |
|---------------------|---------|------------|-------------|---------------|-------------------|------------------------------|
| 3                   | India   | Tamil Nadu | Nellikuppam | 14            | 109               | 12/30/2011 05:30             |
| 3                   | India   | Tamil Nadu | Panruti     | 10            | 105               | 06:30                        |
| 3                   | India   | Tamil Nadu | Cuddalore   | 4             | 109               | 05:30                        |

#### Suggested Action for the Community:

- Over north coastal Tamil Nadu and south coastal Andhra Pradesh, total suspension of fishing operations.
- Coastal hutment dwellers to be moved to safer place.
- People in affected areas to remain indoors.
- Farmers are advised to drain out excess water from the field to prevent crop damage.

- Taller crops like banana, leaves may be removed and extra physical support may be given.
- Fishermen along north Tamil Nadu, Puducherry & south Andhra Pradesh coasts are advised not to venture into sea during next 48 hrs.

### **Immediate Action:**

IAG Tamil Nadu is monitoring the situation and collecting specific information on Tropical Cyclone THANE-11 and its predicted path from various sources and next update will be shared as we get more information.

### **Weather Forecast:**

Rainfall at most places with heavy to very heavy falls at a few places and isolated extremely heavy falls (25cm or more) would occur over north Tamil Nadu & Puducherry during next 48 hours. Rainfall at most places with isolated heavy to very heavy rainfall would also occur over south coastal Andhra Pradesh and Rayalseema and isolated heavy rainfall would occur over south Tamil Nadu during the same period.

Squally winds speed reaching 55-65 kmph gusting to 75 kmph is likely along and off north Tamil Nadu, Puducherry and south Andhra Pradesh coasts. The wind speed will increase gradually becoming 110-120 kmph gusting to 135 kmph along and off north Tamil Nadu and adjoining south Andhra Pradesh coast from today night onwards.

Storm surge of about 1 meter height above the astronomical tide would inundate the low lying areas of Chennai and Tiruvallur, Kanchipuram & Villupuram districts of north Tamil Nadu at the time of landfall. Sea condition is very rough. It will gradually become very high to phenomenal along and off north Tamil Nadu, Puducherry and south Andhra Pradesh coasts.

### **Sources of Information and links**

- i. Indian Meteorological Department (IMD)  
[http://www.imd.gov.in/section/nhac/dynamic/allindia\\_main.htm](http://www.imd.gov.in/section/nhac/dynamic/allindia_main.htm)
- ii. National Disaster Management Authority (NDMA)  
<http://www.imd.gov.in/section/nhac/dynamic/cwind.htm>
- iii. Global Disaster Alert and Coordination System (GDACS)  
<http://www.gdacs.org/reports.asp?eventType=TC&ID=27461&system=asgard&new=true>
- iv. IAG Tamil Nadu

**Important Contacts:**

| Sl. No. | Name                 | Designation                         | Mobile No   | E-mail   |
|---------|----------------------|-------------------------------------|-------------|--|
| 1.      | Mr. Joseph P Sahayam | Convenor IAG Tamil Nadu             | 09840881268 | <a href="mailto:jpsahayam.casachennai@yahoo.com">jpsahayam.casachennai@yahoo.com</a> |
| 2.      | Mr. Vikrant Mahajan  | COO, Sphere India                   | 09818666831 | <a href="mailto:vik@sphereindia.org.in">vik@sphereindia.org.in</a>                   |
| 3.      | Mr. Baleshwar Singh  | Documentation Officer, Sphere India | 08826655629 | <a href="mailto:baleshwar@sphereindia.org.in">baleshwar@sphereindia.org.in</a>       |