

INDRANARAYANPUR NAZRUL SMRITI SANGHA (INSS)

Vill.-Indranarayanpur, PO- Ramnagar Abad, PS- Dholahat,(Formerly Pathar Pratima),

Pin- 743349, Mob: 9830185170, 9874235287,

Email: inssindia@gmail.com, inssgoal2020@gmail.com

City Office : 8/2, Khanpur road. Kolkata-700 047

A rapid Assessment on the Disaster in Sundarban Region

The assessment areas of INSS are Four Blocks of South 24 Paraganas. Those are Pathar Pratima, Mathurapur-II, Sagar, and Namkhana. Kakdwip is also so affected. This assessment is made by the INSS Field workers, INSS's community based task force members and volunteers of Disaster Preparedness trained by Civil Defence and UNICEF from those blocks and by local Panchayet, Panchayet Samity and others stake holders.

Date of Assessment: 25th May 2009

A severe natural calamity by severe rainfalls and the dreadful cyclone Aila has affected thousands of villages of Sundarbans and peoples are in victim. River banks have been breached here and there. All the areas are logged with high salinity of water and the victims have been evacuated and taken place on the high land places i.e. Schools, Hospitals, markets, roads etc. The people lived on the highland places of roads have been able to form a little no. of temporary shelters lack of sufficient tarpaulins. Peoples are in the grim situation of health and hygiene. A very few no. of sheltered people has been able to take their family survival kits for one or two days with which they can maintain their requirements. Most of the people were in so danger that they couldn't be able to take their Family and Child survival Kits. People's Sufferings are increasing due to Ponds and tube wells are logged with high salinity of water. Most of the mud houses, agricultural fields, vegetable crops, livestock, poultry birds and fisheries are fully damaged.

Two persons and a child was died of this calamity. They are 1. Sucholika Majhi(10), D/O- Jogen Majhi, village: Dakshin Sitarampur, G-Plot Gram Panchayet, Pathar Pratima Block. 2. Khandi Sheet (65), w/o- Girish, Harekrishnapur village of Gopal Nagar G.P., Pathar Pratima. 3. Dinesh Kayal(40) s/o- Durgapada, khetramohanpur of Brajaballavpur GP of Pathar Pratima Block.

Two snake bites: 1. Sk. Kamal(60) S/O-, Mahabbat Nagar, Nandakumarpur GP of Mathurapur-II, 2. Soma sheet (15) D/O-Pancham, Achintya Nagar GP

A tentative quantitative report regarding the present flood situation is attached herewith .

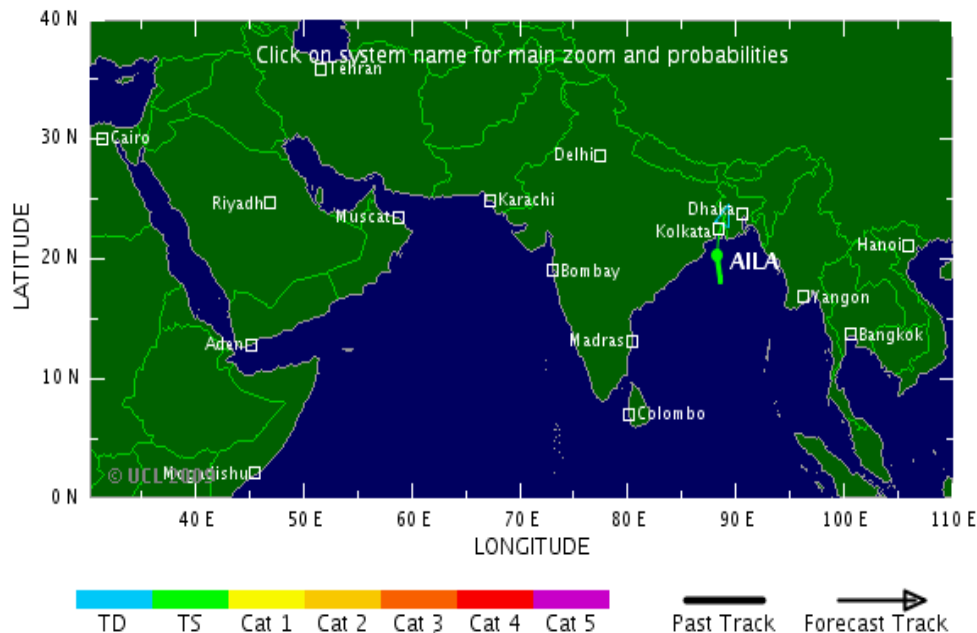
Kolkata Regional Weather Forecast, valid till noon 25 May 2009
<http://www.imdkolkata.gov.in/regsum/regsum.php>

- **Chief Feature:**-Yesterday's depression has further intensified into a deep depression and now lies about 550 Km south of Kolkata.The system likely to intensify further into a **Cyclonic Storm** and cross West Bengal/ Bangladesh coast near 89° East, about 100 Km east of Sagar Island by tomorrow the 25TH May'09 evening.
- **Gangetic West Bengal** :Rain or thundershower likely to occur at most places over Gangetic West Bengal.
- **Sub-Himalayan West Bengal and Sikkim**:Rain or thundershower likely to occur at many places over Sub-Himalayan West Bengal and at a few places over Sikkim.
- **Orissa** :Rain or thundershower likely to occur at most places over North Orissa and at many places over South Orissa.
- **Bihar** :Rain or thundershower likely to occur at a few places over Bihar.
- **Jharkhand** :Rain or thundershower likely to occur at many places over Jharkhand.

- **Tripura** :Rain or thundershower likely to occur at many places over Tripura.
- **Andaman and Nicobar Islands** :Rain or thundershower likely to occur at many places over Andaman and Nicobar Islands.

Source-II:Tropical Storm Risk (TSR); <http://www.tropicalstormrisk.com/>

Current Data			24-hr Ahead Projection						
25 May, 2009 3:30 GMT			26 May, 2009 3:30 GMT						
System	Basin	Lat	Long	Wind	Cat	Lat	Long	Wind	Cat
AILA	N Indian	20.3 N	88.1 E	55 kts	TS	23.8 N	88.9 E	30 kts	TD



TS=Tropical Storm

- **Immediate and short term requirements:**

Children:	General
<ol style="list-style-type: none"> 1. Infants foods 2. Clothes 3. Medicines (recognized by WHO) 4. ORS 	<ol style="list-style-type: none"> 1. Tarpaulins for temporary shelters 2. Bleaching powder 3. lime 4. Halogen tabs 5. disinfectants/ mosquito repellants 5. Clean linen and bedding materials 6. Hurricanes and lamps 7. Medicines for cough, cold, fever, diarrhoea and other general ailments. 8. Setting up health camps
Women and adolescent girls <ol style="list-style-type: none"> 1. Dry food like Chira, muri and molasses 2. sanitary napkins 3. clothes 4. medicines(recognized by WHO) 5. ORS etc 	